

JVC



Picture Navigator

ENGLISH

For Macintosh®



INSTRUCTIONS

For Customer Use:

Enter below the Model No. and Serial No. Retain this information for future reference.

Model No. _____

Serial No. _____

LYT0406-001B

EN

MAJOR FEATURES	3
INSTALLATION	4
HOW THE DESKTOP WORKS	5 – 9
BOOKSHELF window	5 – 8
ALBUM window	8
PICTURE window	9
CAMERA window	9
CHANGING PICTURE NAVIGATOR SETTINGS	10 – 11
TRANSFERRING AN IMAGE FROM JVC VIDEO SOURCE UNIT TO PC	12
Saving an image on your hard drive	12
Deleting all the still images stored in the camera	12
OPENING AN IMAGE STORED ON YOUR HARD DRIVE	13
Zooming in on or out of an image	13
Rotating an image	13
CHANGING THE ALBUM'S FRONT COVER	14
Changing the comment	14
MOVING AN IMAGE TO ANOTHER ALBUM	15
Adding an album created using another application	15
EDITING AND PROCESSING AN IMAGE USING ANOTHER APPLICATION	16
TRANSFERRING AN IMAGE FROM PC TO JVC VIDEO SOURCE UNIT	17
INDEX	18
NOTICE FOR USERS	19

CAUTION:

- Operate this equipment according to the operating procedures described in this manual.
- Use only the provided CD-ROM. Never use any other CD-ROM to run this software.
- Do not attempt to modify this software.
- Changes or modifications not approved by JVC could void user's authority to operate the equipment.

How to handle a CD-ROM

- Take care not to soil or scratch the mirror surface (opposite to the printed surface). Do not write anything or put a sticker on either the front or back surface. If the CD-ROM gets dirty, gently wipe it with a soft cloth outward from the center hole using a circular motion.
- Do not use conventional disc cleaners or cleaning spray.
- Do not bend the CD-ROM or touch its mirror surface.
- Do not store your CD-ROM in a dusty, hot or humid environment. Keep it away from direct sunlight.

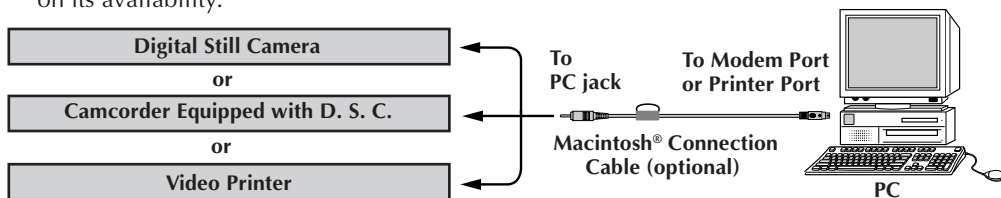
What is Picture Navigator Software ?

Picture Navigator software is a type of application program that allows you to transfer still images stored in a video source unit's built-in memory to a personal computer by connecting the video source unit to a PC.

What's more, you can also transfer images stored on your PC's hard drive back to the video source unit, or you can transfer a modified image to/from a video printer.

Connections

- Before connection, turn off the power on your PC and video source unit for safety.
- We recommend you should use the AC Power Adapter.
- The Macintosh® connection cable is optionally available.
For U.S. : VC-VJ38MUJ
For Europe and other areas : VC-VJ38MEJ
- Consult the JVC Service Center described on the sheet included in the package for details on its availability.



Operating Environment

- An Apple® Macintosh® computer with a 68040 processor or faster/PowerPC 601 or faster
- OS : Apple® system software version 7.5 or later
- RAM requirement : at least 4 MB
- Available Hard Disk space of at least 6 MB
- Color display capable of at least 640 x 480 pixels, 256 colors
Recommended 800 x 600, 32000 colors
- RS-422 (modem or printer) port
- CD-ROM drive

* Apple® and Macintosh® are trademarks of Apple Computer Inc., registered in the U.S.A. and other countries.

* Other product and company names included in this instruction manual are trademarks and/or registered trademarks of their respective holders.

CAUTION

- There is no guarantee that Picture Navigator will work on all computers meeting the system requirements listed above.
- If your computer is a Power Macintosh 4400, 5400 or 6400 series or a PowerBook 2400 or 3400, this software may not operate properly. It is recommended that you upgrade your OS.
Power Macintosh 4400 series or PowerBook 2400 and 3400: Upgrade to Mac OS 8.0 or later.
Power Macintosh 5400 and 6400 series: Upgrade to Mac OS 7.6.1 or later.

NOTE

In this instruction manual, the term **video source unit** refers to all devices listed in "Connectable Devices" above (Digital Still Cameras, Camcorders equipped with a D.S.C. and Video Printers), and **camera** refers to Digital Still Cameras and Camcorders equipped with a D.S.C. only. Depending on the video device used, some operations may differ from those listed in the manual. For more information, refer to the instruction manual of the video device.

INSTALLATION (Picture Navigator)

Refer to the Macintosh® instruction manual for basic Macintosh® operation.

- 1.** Start up your Macintosh®.
 - Close any other applications that are running.
- 2.** Insert the CD-ROM into the CD-ROM drive.
- 3.** Double-click the **CD-ROM** icon.
- 4.** Double-click the **JVC** folder.
- 5.** Drag and drop the **Picture Navigator** folder to copy it onto your hard drive.
 - Copy it to any place other than the system folder.

STARTING UP PICTURE NAVIGATOR

- 1.** Start up your Macintosh®.
- 2.** Open the **Picture Navigator** folder and double-click the **Picture Navigator** icon.
 - **Picture Navigator** starts up.

HOW TO CLOSE THE PROGRAM

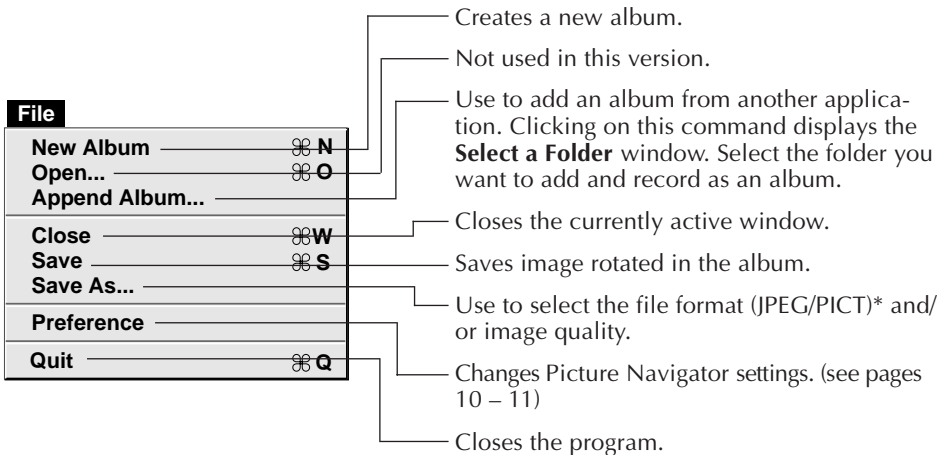
Click **Quit** from **File** in the menu bar.

MENU BAR

All program functions can be selected from the menus in the menu bar. Click and hold the mouse button on any item in the menu bar to open the corresponding pulldown menu. Then release the button on the desired command in the pulldown menu. Some menu entries are invalid depending on the program status. Invalid commands appear lighter than valid commands.

BOOKSHELF window

Front cover images of all the albums are shown.



* What is JPEG ?

- JPEG (Joint Photographic Expert Group) is a leading standard defining the compression and decompression of still color pictures.
- The transfer data size is reduced because the images are compressed. This results in a shorter transfer time.

* What is PICT ?

This is an image format widely used on the Macintosh®. Most Macintosh® image-editing applications support this format.

Edit

Undo	⌘ Z
Cut	⌘ X
Copy	⌘ C
Paste	⌘ V
Clear	
Select All	⌘ A
Open by Other Application	
Use for Album Cover	
Remove Album Cover	

Undoes the most recent selection.

Cuts the selected comment for the thumbnail image and moves it to the clipboard.

Copies the selected comment for the thumbnail image to the clipboard.

Pastes the comment for the thumbnail image from the clipboard.

Clears the selection.

Selects all the albums in the **BOOKSHELF window** or all the images in the **ALBUM window**.

Loads another application and opens the selected image.

Select it to change the album's front cover in the **BOOKSHELF window**.

Use to change an album's front cover from an image to a generic illustration.

View

Name	
Recorded Date	
Edited Date	
Comment	
None	
Sort by Name	
Sort by Recorded Date	
Sort by Edited Date	
Sort by Comment	
Rotate 90° Clockwise	
Rotate 90° Counterclockwise	
Rotate 180°	

Displays the file name for each image in an album.

Displays the date when the image was recorded.

Displays the date when the image was added or edited.

Displays the comment for each image in an album.

Does not display any information (Name/Recorded Date/Edited Date/Comment) for each thumbnail image.

Sorts by the file name of each image in an album.

Sorts by the date when each image was recorded.

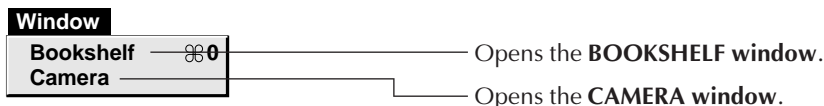
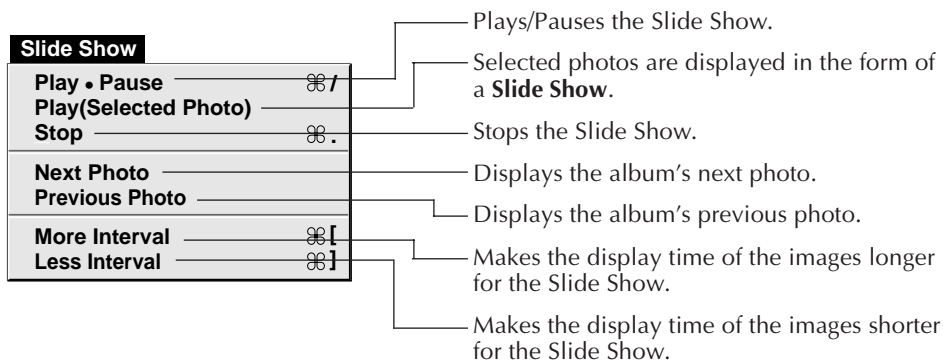
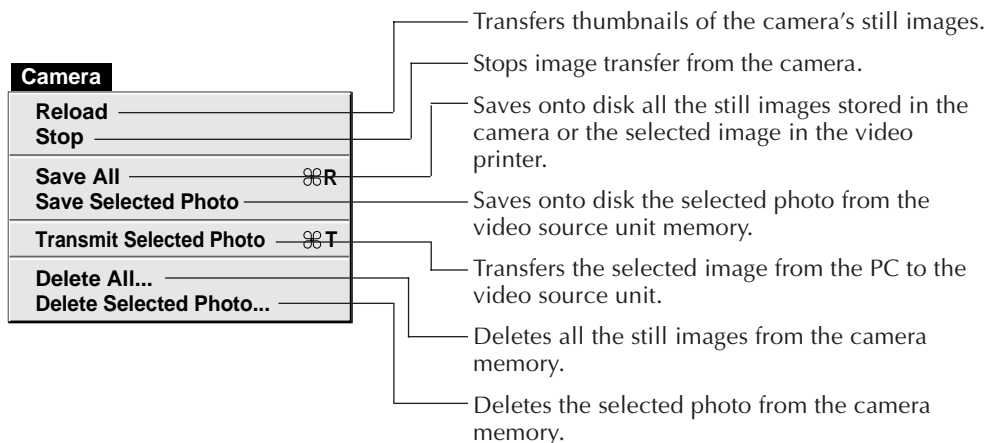
Sorts by the date when each image was added or edited.

Sorts by the comment for each image in an album.

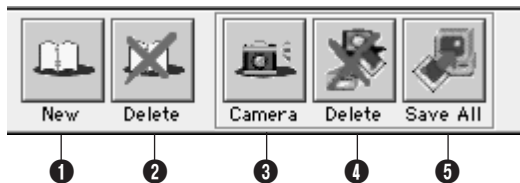
Rotates the image 90 degrees clockwise.

Rotates the image 90 degrees counterclockwise.

Rotates the image 180 degrees.



■ BOOKSHELF window toolbar

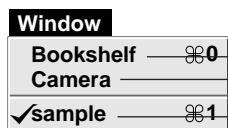


- ① Creates a new album.
- ② Deletes the selected album.
- ③ Captures all the thumbnail images stored in the camera and displays them in the **CAMERA window**.
- ④ Deletes all the still images stored in the camera.
- ⑤ Saves all the still images stored in the camera or the selected image in the video printer in a new album on the PC's hard drive.

ALBUM window

The image list is displayed on the screen.

The menus are the same as those shown in the **BOOKSHELF window**, except for the **Window** menu.

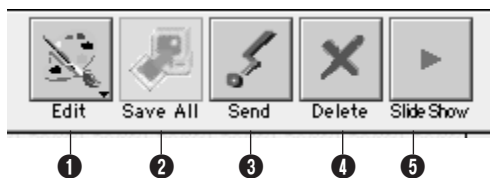


Opens the **BOOKSHELF window**.

Opens the **CAMERA window**.

Displays the folder name for the currently open album.

■ ALBUM window toolbar

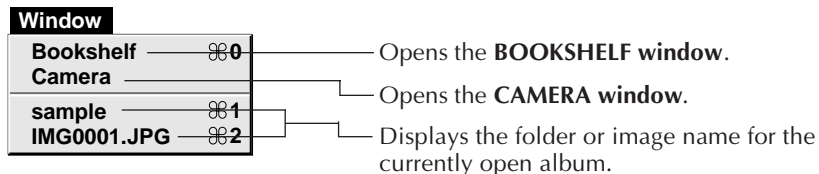


- ① Loads a picture editing software program and opens the selected image.
The icons of the registered software are displayed in the **File — Preference — Edit** screen. (see page 11)
- ② Saves all the still images stored in the camera or the selected image in the video printer in an album on the PC's hard drive.
- ③ Transfers the selected image from the PC to the video source unit.
- ④ Deletes the selected image.
- ⑤ Plays/Pauses the slide show.

PICTURE window

The selected image is displayed at full size.

The menus are the same as those shown in the **BOOKSHELF window**, except for the **Window** menu.



PICTURE window toolbar



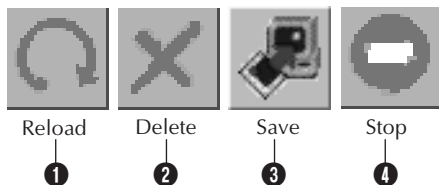
- 1 Rotates the image 90 degrees counterclockwise.
- 2 Rotates the image 90 degrees clockwise.
- 3 Displays the album's previous photo.
 - Displays images in reverse order during a slide show.
- 4 Plays/Pauses the slide show.
- 5 Displays the album's next photo.
 - Displays images in forward order during a slide show.

CAMERA window

This window displays thumbnails of the camera's still images.

The menus are the same as those shown in the **BOOKSHELF window**.

CAMERA window toolbar



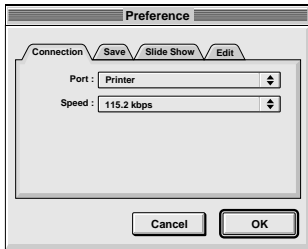
- 1 Transfers thumbnails of the camera's still images to the PC.
- 2 Deletes the selected photo from the camera memory.
- 3 Saves onto disk the selected photo from the camera memory.
- 4 Stops image transfer from the camera.

Set the program preferences such as connection, serial port speed and image display.

The menu display may change depending on your PC.

Connection

The following screen appears when you select **File** — **Preference** — **Connection**. Click the **OK** button after changing the settings.



Port

Modem : select it when connecting to the modem port.

Printer : select it when connecting to the printer port.

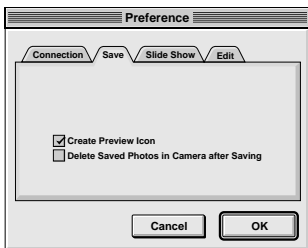
Speed

The maximum speed is set automatically depending on the PC you use.

Depending on your PC, certain serial speeds may not be selectable. If transmission errors occur during use, change to a lower serial speed setting. In this case, the rate of image transfer will be slower.

Save

The following screen appears when you select **File** — **Preference** — **Save**. Click the **OK** button after changing the settings.



Create Preview Icon

Click the **check box** to have an icon of the captured image created and displayed along with its file name.

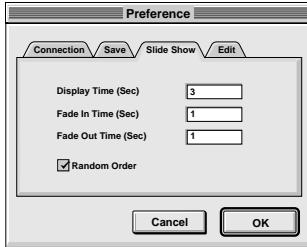
Delete Saved Photos in Camera after Saving

Click the **check box** to have still images stored in the camera automatically deleted after they are saved on the PC.

Slide Show

The following screen appears when you select **File** — **Preference** — **Slide Show**.

Click the **OK** button after changing the settings.



Display Time (Sec)

Set the display time of the images for the Slide Show.

Fade In Time (Sec)/Fade Out Time (Sec)

Set Fade In/Out Time of the images for the Slide Show.

Random Order

Clicking the **check box** displays images in random order automatically during the Slide Show.

Edit

The following screen appears when you select **File** — **Preference** — **Edit**.



Editor Application

Select up to 4 image processing applications to be used for processing captured images.

Video source unit preparation

- 1 Set your video source unit so that you can transfer images to the PC using the cable.
When using a camera...
If you are using a Camcorder equipped with a D. S. C., set it to the D. S. C. mode, then set it to the playback position.
If you are using a D. S. C., set it to the playback position.
Set your camera to the PC mode.
When using a video printer...
Set your video printer to the PC mode.
Display a stored image on the TV monitor.

PC operation (when using a camera)

- 2 Select **Window** — **Camera**, or click the **Camera** button in the **BOOKSHELF window**.
 - When the transfer is complete, thumbnail images captured into the **CAMERA window** will be displayed.
 - These images are not saved onto the PC's hard drive at this time.
- 3 Click the image which you want to view at full size.
 - The selected image is displayed at full size.

PC operation (when using a video printer)

- 2 To create a new album, click the **Save All** button in the **BOOKSHELF window**. To specify an album to store the image in, click the album's cover image in the **BOOKSHELF window**, then click the **Save All** button in the **ALBUM window**.
 - The selected image in the video printer is saved onto the PC's hard drive.

SAVING AN IMAGE ON YOUR HARD DRIVE

Select **Camera** — **Save All**.

This creates a new album folder and saves all the images on your hard drive.

- When you want to save only a certain image:
 1. Click the upper left corner of the image that you want to save (the cursor changes to a check mark ✓). A red circle will appear in the upper left corner. Clicking it again erases the red circle.
 2. Select **Camera** — **Save Selected Photo**. You can also click the **Save** button in the **CAMERA window**.

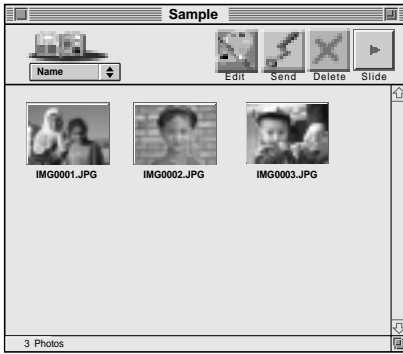
DELETING ALL THE STILL IMAGES STORED IN THE CAMERA

Select **Camera** — **Delete All**.

- When you want to delete only a certain image:
 1. Click the upper left corner of the image that you want to delete (the cursor changes to a check mark ✓). A red circle will appear in the upper left corner. Clicking it again erases the red circle.
 2. Select **Camera** — **Delete Selected Photo**. You can also click the **Delete** button in the **CAMERA window**.

CAUTION


- Beware that the image stored in the camera will also be deleted when you delete an image from the **CAMERA window**.
- Transfer is unavailable while the camera is displaying an index image screen or a menu screen. You can only transfer images being displayed by the camera at full size.
- Protected images in the camera cannot be deleted.



You can open an image that has been transferred from the video source unit and stored on your hard drive.

- 1 Click the album.
- 2 Click the image which you want to view at full size.
 - The selected image is displayed at full size.
 - Click the ► button in the **PICTURE window** to run through images in succession automatically (Slide Show). Pressing the ◀ button during a slide show displays images in reverse order. Click the ► button again to stop.
 - Refer to page 11 to change the display time of the images.
 - Click the ► button in the **PICTURE window** to display the next full image.
 - Click the ◀ button in the **PICTURE window** to display the previous full image. If the ► button is pressed after this, images are shown as a slide show in reverse order.

ZOOMING IN OR OUT OF AN IMAGE

Click the  button in the bottom left corner of the **PICTURE window** to select your desired magnification.

The percentage of magnification is always displayed in the bottom left corner of the **PICTURE window**.

The factory setting is **Fit to Window**, which will automatically display the image at a size that fits the window.

Note: An image that has been zoomed-in or -out cannot be saved.

ROTATING AN IMAGE

Select **View** in the **PICTURE window** — **Rotate 90° Clockwise**, **Rotate 90° Counterclockwise** or **Rotate 180°**.

Rotate 90° Clockwise : Rotates an image 90 degrees in the clockwise direction every time you select it.

Rotate 90° Counterclockwise : Rotates an image 90 degrees in the counterclockwise direction every time you select it.

Rotate 180° : Rotates an image 180 degrees.

Note: You can save the rotated image.

Each album's front cover in the **BOOKSHELF window** is the first image of the **ALBUM window**. When you want to change an album's front cover, do the following.

Edit	
Can't Undo	⌘Z
Cut	⌘X
Copy	⌘C
Paste	⌘V
Clear	
Select All	⌘A
Open by Other Application	
Use for Album Cover	
Remove Album Cover	

1 When you click on the upper left corner (the cursor changes to the check mark ✓) of the image that you want to use as the front cover in the **ALBUM window**, a red circle will appear in the upper left corner of the image.

2 Select **Edit — Use for Album Cover**.

- The album front cover in the **BOOKSHELF window** is changed to the new front cover.
- To change an album's front cover from an image to a generic illustration, select **Edit — Remove Album Cover**.

CHANGING THE COMMENT

View	
Name	
Recorded Date	
Edited Date	
Comment	
None	
Sort by Name	
Sort by Recorded Date	
Sort by Edited Date	
Sort by Comment	
Rotate 90° Clockwise	
Rotate 90° Counterclockwise	
Rotate 180°	

You can change the comment for the image.

1 Select **View — Comment** in the **ALBUM window**.

- The comment will be displayed under the image.

2 Click the image comment display in the **ALBUM window**.

- The comment display is highlighted.

3 Input the comment, and hit the **RETURN** key.

- The comment is changed to the new one.

You can move an image among albums by displaying 2 or more albums.

1 First, open the **ALBUM window** for the album you want to move an image from, and then open another **ALBUM window** for the album that you want to move the image to.

- Move each window to a position that allows easy viewing, dragging and dropping.

2 Drag the image you want to move and drop it into the album where you want to insert it.

- To change the order of images, drag the image you want to move and drop it at the desired position.

When copying an image to another album, drag and drop while pressing the option key in step 2.

ADDING AN ALBUM CREATED USING ANOTHER APPLICATION

You can add an album that has already been created using another application to the Picture Navigator software.

File	
New Album	⌘N
Open...	⌘O
Append Album...	
Close	⌘W
Save	⌘S
Save As...	
Preference	
Quit	⌘Q

1 Select **File — Append Album...** in the **BOOKSHELF window**.

- The **Select a Folder** window opens.

2 Select the folder you want to add the album to before pressing the **Select** button.

- The album is added to the **BOOK-SHELF window**.

You can select the image editor of your choice as the Picture Navigator's editor.

File	
New Album	⌘N
Open...	⌘O
Append Album...	
Close	⌘W
Save	⌘S
Save As...	
Preference	
Quit	⌘Q

Edit	
Can't Undo	⌘Z
Cut	⌘X
Copy	⌘C
Paste	⌘V
Clear	
Select All	⌘A
Open by Other Application	
Use for Album Cover	
Remove Album Cover	

Preparation

- 1 Select **File** — **Preference** — **Edit**. The **Edit** window in the **Preference** appears.
- 2 Click on the **Set** button.
- 3 Select up to 4 image processing applications. The name of each selected application is displayed in the **Editor Application** box.
- 4 Click on the **OK** button.

Operation

- 5 Select the image you want to edit. When you click on the upper left corner of the image that you want to edit (the cursor changes to a check mark ✓) in the **ALBUM window**, a red circle will appear in the upper left corner. Clicking it again erases the red circle. You can select 2 or more images this way.
- 6 Click on the **Edit** button in the **ALBUM window** or **PICTURE window** to open the image processing application.
 - If you click and hold the **Edit** button, a list of applications appears under the **Edit** button. To select the application you wish to use, move the mouse pointer to it and release the mouse button.

NOTES:

- If you select **Edit** — **Open by Other Application**, the most recently used image processing application opens automatically and the **Edit** button changes to the icon of that application.
- The list displayed by clicking and holding the **Edit** button is of two lists of applications. The list above the line shows the applications you selected in **File** — **Preference** — **Edit**, and the list under the line shows applications currently running on your PC.

If you have selected 2 or more images, all the images will be displayed at full size. Refer to the instruction manual of the application software for the editing procedures.

Note: *The processed image is saved in the **ALBUM window**.*

Not all software can display multiple images.

Video source unit preparation

- 1 Set the video source unit so that you can transfer images from the PC using the cable.

When using a camera...

If you are using a Camcorder equipped with a D. S. C., set it to the D. S. C. mode, then set it to the playback position.

If you are using a D. S. C., set it to the playback position.

Set your camera to the PC mode.

When using a video printer...

Set your video printer to the PC mode.

Camera	
Reload Stop	
Save All Save Selected Photo	⌘R
Transmit Selected Photo	⌘T
Delete All... Delete Selected Photo...	

PC preparation

- 2 Select the image to be transferred to the video source unit.

When you click on the upper left corner (the cursor changes to the check mark ✓) of the image that you want to transfer in the **ALBUM window**, a red circle will appear in the upper left corner of the image.

Clicking it again erases the red circle.

When using a camera...

You can select 2 or more images this way. Select all the images if you wish to transfer all the still images to the video source unit.

When using a video printer...



Select one image to be transferred. If you try to transfer two or more images at a time, you will have to click **Stop** in the transfer dialog box to abort.

- 3 Select **Camera — Transmit Selected Photo**. Or click on the **Send** button in the **ALBUM window**. The selected image is transferred to the video source unit.


NOTES

- Images that take up more than approx. 200 KB cannot be transferred.
- Image transfer is unavailable if the camera memory becomes full and “**Camera memory is full. Picture transfer is aborted.**” is displayed while transferring images to it.
- The maximum number of pictures that can be transferred to the camera is limited by the size of the picture files.



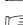
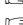

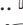
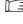
A

- Adding an album created using
 - another application  pg. 15
- Album window  pg. 8




B

- Bookshelf window  pg. 5



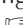
C

- Camera window  pg. 9
- Changing Picture Navigator settings  pg. 10
- Changing the album's front cover ...  pg. 14
- Changing the comment  pg. 14
- Connections  pg. 3
- Connection preferences  pg. 10
- Create preview icon  pg. 10

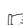
D

- Delete saved photos in camera
 - after saving  pg. 10
- Deleting all the still images
 - stored in the camera  pg. 12
- Display time (sec)  pg. 11


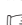
E

- Edit preferences  pg. 11
- Editing and processing an image using
 - another application  pg. 16
- Editor application  pg. 11

F

- Fade in time (sec)/fade out
 - time (sec)  pg. 11


H

- How the desktop works  pg. 5
- How to close the program  pg. 4


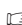
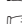
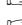
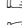
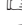
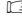



I


- Installation  pg. 4

J

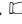
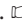
- JPEG  pg. 5

M

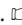


- Major features  pg. 3
- Menu bar  pg. 5
 - Camera menu  pg. 7
 - Edit menu  pg. 6
 - File menu  pg. 5
 - Slide Show menu  pg. 7
 - View menu  pg. 6
 - Window menu
 - in Album window  pg. 8
 - in Bookshelf window  pg. 5
 - in Picture window  pg. 9

- Moving an image to another
 - album  pg. 15



O

- Opening an image stored on your
 - hard drive  pg. 13
- Operating environment  pg. 3






P

- PICT  pg. 5
- Picture window  pg. 9
- Port  pg. 10

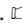

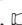
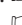
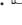

R

- Random order  pg. 11
- Rotating an image  pg. 13

S

- Save preferences  pg. 10
- Saving an image on your hard
 - drive  pg. 12
- Slide show preferences  pg. 11
- Speed  pg. 10
- Starting up Picture Navigator  pg. 4

T

- Toolbar
 - Album window toolbar  pg. 8
 - Bookshelf window toolbar  pg. 8
 - Camera window toolbar  pg. 9
 - Picture window toolbar  pg. 9
- Transferring an image from JVC
 - video source unit to PC  pg. 12
- Transferring an image from PC to
 - JVC video source unit  pg. 17

W

- What is Picture Navigator software? ..  pg. 3
- WWW server  pg. 19

Z

- Zooming in or out of an image  pg. 13

Use of this software is authorized according to the terms of the software license.

When contacting the nearest JVC office or agency in your country about this software (refer to the JVC Worldwide Service Network at <http://www.jvc-victor.co.jp/english/worldmap/index-e.html>), please fill out the following and have the appropriate information ready.

Product Name		
Model		
Problem		
Error Message		
PC	Manufacturer	
	Model	<input type="checkbox"/> Desktop <input type="checkbox"/> Laptop
	CPU	
	OS	
	Memory	MB
	Available Hard Disk Space	MB

Please note that it may take some time to respond to your questions, depending on their subject matter.

JVC cannot answer questions regarding basic operation of your PC, or questions regarding specifications or performance of the OS, other applications or drivers.

EN

Picture Navigator

JVC
VICTOR COMPANY OF JAPAN, LIMITED